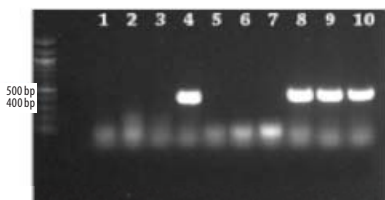


## PCR Master Mixes from AMRESCO

*Ready to use solutions ideal  
for Colony Screening*



**Colonies were screened directly using Ready PCR Mix, 2X.** 10 distinct colonies were suspended into Ready PCR Mix, 2X in separate PCR tubes. 5 µl of the PCR reaction mix was plated on gridded LB plates with Kanamycin for 37°C overnight growth. After 30 PCR cycles products were screened on a 1% agarose gel. Colonies 4, 8, 9 and 10 contained the desired sequences.

*Courtesy of Dr. Irene Lee, Case Western Reserve University, Cleveland, OH*

*"Being able to quickly screen multiple colonies at once through PCR while having separate colonies prepared for further isolation of positive screen tests substantially reduces the in-lab time ... [Ready PCR Mix, 2X] ... would certainly become another valuable and powerful research tool utilized in our experiments."*

Dr. Irene Lee,  
Case Western Reserve University  
Cleveland, OH

## Ready PCR Mix, 2X

The only complete PCR master mix that takes you from Gel-to-Visualization in one easy step.

### Direct to Gel Loading

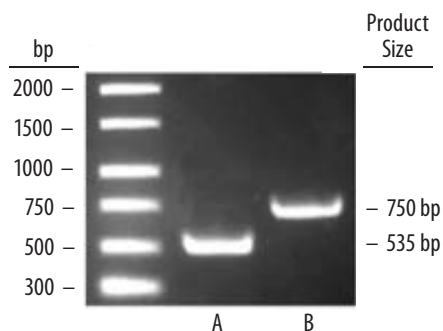
Complete, ready-to-use solution reduces sample handling and allows you to quickly perform multiple reactions in one easy step.

### Immediate Visualization

Both a fast migrating tracking dye and a fluorescent DNA dye is included which allows immediate band visualization of the amplified product.

### Safe to Use

Formula is both non-toxic and non-mutagenic and eliminates the need to use Ethidium Bromide.



### Ready PCR Mix, 2X efficiently amplifies plasmid and genomic DNA.

Single copy targets were amplified from 50 ng of pUC19 plasmid (A) or *S. aureus* genomic DNA (B) for 35 cycles. 10 µl of each PCR reaction was directly loaded onto a 1% agarose gel and visualized with a Syngene HR gel doc system.

### ALSO AVAILABLE

## Extender™ PCR-to-Gel Master Mix, 2X

Same great formulation as Ready PCR Mix, 2X without the fluorescent DNA dye.

Description	Product Code	Pack Size	List Price
<b>Ready PCR Mix, 2X</b> Mix Includes: Extender™ DNA Polymerase, Reaction Buffer, dNTPs, Tracking Dye, and Fluorescent DNA Dye	N806-2X1.25ML (100 RXNs)	2 x 1.25 ml	\$80.00
<b>Extender™ PCR-to-Gel Master Mix, 2X</b> Mix includes: Extender™ DNA Polymerase, Reaction Buffer, dNTPs, and Tracking Dye.	N867-2X1.25ML (100 RXNs)	2 x 1.25 ml	\$70.00

## EZ-Vision™ DNA Loading Dyes

*Non-mutagenic, non-toxic  
loading buffer*

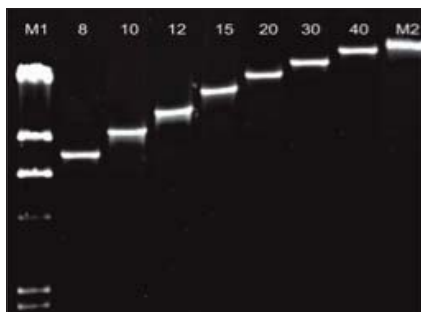


**EZ-Vision™ One, Two and Three.** Left image: 1% TAE agarose gel showing the fluorescence of AMRESCO's 1 kb Ladder (K180-250UL) stained with EZVision™ One (lane 1), EZ-Vision™ Two (lane 2) and EZ-Vision™ Three (lane 3). Right image: Digital camera photograph of the same gel as left image, showing the colors and migration position of the one fast migrating tracking dye of EZ-Vision™ One (lane 1), the two tracking dyes of EZ-Vision™ Two (lane 2), and the three tracking dyes of EZ-Vision™ Three (lane 3).

## Extender™ DNA

### Polymerase Blend, 500U

*Amplifies long and  
difficult templates*



**Long PCR with Extender™ DNA Polymerase Blend, 500U.** Amplicons ranging in size from 8 kb to > 40 kb are shown.

## Essential PCR Products from AMRESCO

Description	Product Code	Pack Size	List Price
<b>GEL ELECTROPHORESIS</b>			
<b>Agarose I™</b> All purpose agarose suitable for analytical and preparative applications; nuclease & protease free.	0710-25G 0710-100G	25 g 100 g	\$45.00 \$120.10
<b>Agarose SFR™</b> Super fine resolution agarose, low melting temperature for analytical and preparative electrophoresis.	J234-25G J234-100G	25 g 100 g	\$92.20 \$230.40
<b>Ready Ladder™ 100 bp</b> DNA MW marker with loading dye, 13 fragments from 100 to 3,000 bp.	N550-300UL	300 µl	\$74.60
<b>Ready Ladder™ 1 kb</b> DNA MW marker with loading dye, 11 fragments from 500 to 10,000 bp.	N551-600UL	600 µl	\$78.50
<b>TAE, 25X</b> DNA electrophoresis buffer best for DNA recovery and resolution of large fragments.	0796-1.6L 0796-4L	1.6 L 4.0 L	\$57.00 \$104.80
<b>TAE, 50X</b> DNA electrophoresis buffer best for DNA recovery and resolution of large fragments.	K915-1.6L	1.6 L	\$109.20
<b>TBE, 10X</b> DNA electrophoresis buffer with high buffering capacity best for resolution of small fragments.	0658-4L 0658-20L	4 L 20 L	\$60.90 \$155.00
<b>GEL VISUALIZATION</b>			
<b>EZ-Vision™ One DNA Dye as Loading Buffer</b> Non-mutagenic, non-toxic fluorescent DNA dye as loading buffer. Immediate visualization with no post staining or destaining. Includes one tracking dye.	N472-KIT	1 kit	\$115.40
<b>EZ-Vision™ Two DNA Dye as Loading Buffer</b> Includes two tracking dyes.	N650-KIT	1 kit	\$115.40
<b>EZ-Vision™ Three DNA Dye as Loading Buffer</b> Includes three tracking dyes.	N313-KIT	1 kit	\$115.40
<b>RELATED PRODUCTS FOR PCR AMPLIFICATION</b>			
<b>Extender™ DNA Polymerase Blend, 500U</b> • Ideal for amplification of long & hard to copy templates. • Wide tolerance for MgCl <sub>2</sub> and salt concentrations. • Generates both blunt end and 3'D overhang products. (FEATURED in Ready PCR Mix, 2X and Extender PCR to Gel Master Mix, 2X)	N638-KIT	500 units	\$135.00
<b>LB Broth</b> Pre-mixed homogeneous powder media for preparation of plasmid DNA and recombinant proteins.	J106-500G J106-1KG	500 g 1 kg	\$43.30 \$97.80
<b>dNTP Mix, 25mM</b> dNTP mixture for PCR with 25mM each of dATP, dCTP, dGTP, dTTP.	E636-40UMOLE	40 umoles	\$58.20